



Information Guide

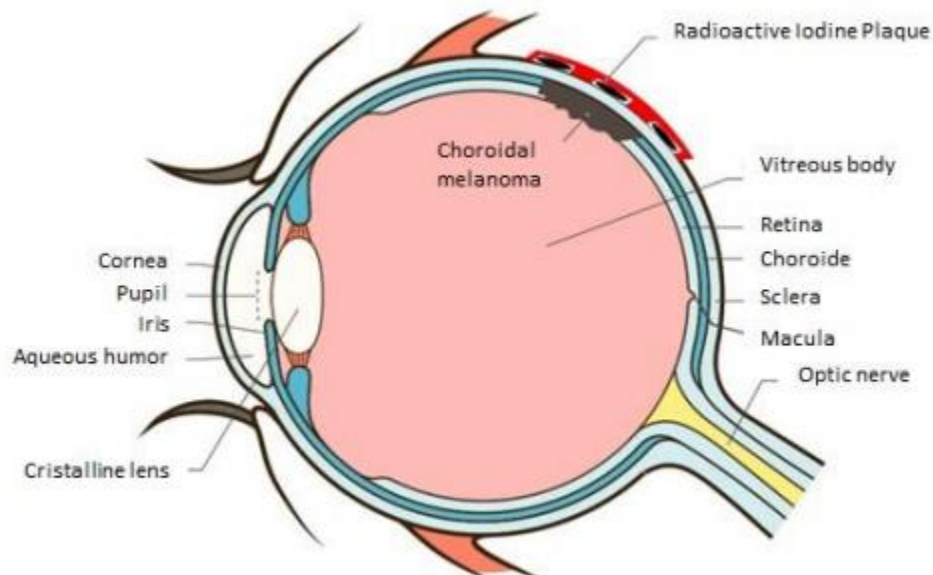
Ophthalmic surgery

Curietherapy

This document provides all the necessary information throughout the entire duration of your treatment.

Definition:

Curietherapy is used to treat choroidal melanoma. A plaque containing sealed iodine radioactive sources is placed near the tumour for a short period of time (typically 3 days). Each radioactive source resembles a small grain of rice measuring about 5 mm in length and 1 mm in diameter. A plaque contains between 9 and 21 sources depending on the case. The surgeon will attach the plaque to the eye sclera in order to cover the tumour.



Choice of iodine plaque:

- Using an ultrasound exam, your physician will assess the aspect and localisation of the tumour. He will then determine the form and size of the plaque as well as the appropriate radiation dose.
- A treatment request will be sent to the radiation oncology department at the Centre Intégré de cancérologie (CIC), who will be responsible for treatment planning and iodine plaque preparation. At this step and prior to surgery, you will meet with the radiation oncologist in charge at the the Centre Intégré de cancérologie (CIC).
- The surgery for iodine plaque positioning and removal are done in an operating room at Saint-Sacrement hospital.

Treatment:

- **Before surgery**, if required, you will be subject to blood work and an electrocardiogram. You will also have to sign a consent form for surgery.
- **Surgeries** for iodine plaque positioning and removal are done in an operating room.
- **After surgery**, the treatment period of a few days can be spent at home under certain conditions.

Recommendations:

- To alleviate pain, analgesics are recommended. You will get a prescription.
- Drops and ointments for your eye will have to be used several times a day.
- You will be able to read or watch television.

Possible side-effects:

- Your physician has informed you about short term side-effects, such as swollen eyelids, pain, edema, redness, diplopia (double vision), or a feeling of pressure near the eye.
- Long term effects of the radiation (after plaque removal) may include a decline in sight or even a total loss of sight.
- Possible complications after plaque removal may include eye dryness, cataract, diplopia (double vision), retinal detachment, optic nerve atrophy, glaucoma and vitreous hemorrhage.

Radiation safety precautions:

- The energy of the emitted radiation by the radioactive sources inside the plaque is very low and only a small fraction of the radiation can exit the body. Even if this is a low level of radiation, for the treatment period, it is recommended for your visitors, friends, and family members to follow some precautions in order to avoid unnecessary exposure
- When possible, keep a minimum distance of 1 meter with other people.
- For treatments at home:
 - Limit your time outside and stay at less than an hour away from the hospital for the entire treatment duration.
 - Sleep alone in a separate bed and avoid too long personal contacts with others
 - Do not use public transport: ask someone to drive you or take a taxi.
 - You will receive a card with information about your radioactive implant. Always keep this card with you (in your wallet) for the entire treatment duration. In case of any problem, it will inform others of your condition.

L'Hôpital du Saint-Sacrement – CHU de Québec ; La clinique d'ophtalmologie	
Nom d'utilisateur : _____	
A T T E N T I O N	
Patient contenant des sources radioactives - Aucune contamination	
Pour renseignements : 418-525-4444	
Demandez la clinique d'ophtalmologie ou le physicien de garde	
Signature : _____	Date : _____
Cet avis n'est plus valide après le : _____	

- Keep in mind that your bodily fluids (urine, faeces, saliva, sweat ...) are not radioactive and do not pose any risk. Same goes for any objects you may touch.

Post-surgery resources:

Contact:

Working days, between 08:00 and 16:00

La clinique d'ophtalmologie de l'Hôpital du St-Sacrement

Tel.: 418 682-7680

Any other time:

INFO-Santé: 811

In case of complications, go to the Saint-Sacrement hospital emergency at any time

